

## 5.1

Spheres - A View from Above:  
Selected Google Earth ImageryJohn R. English  
NARCAP Research AssociateJanuary 2009  
Copyright

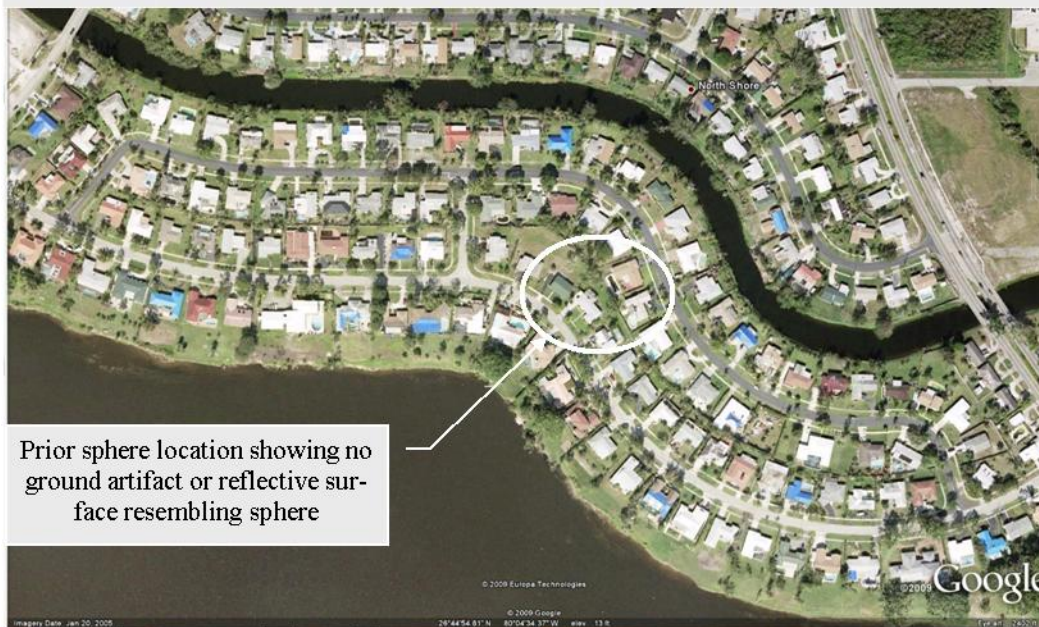
## Introduction

This paper presents a small selection of high altitude color photographs found over a several year period using the Google Earth utility. At least ten more are known to exist that are not presented here. Interested readers should also consult several blogs that discussed this subject [e.g., <http://googlesightseeing.com/2005/05/12/ufo/comment-page-22/#comments> and <http://simplyted.blogspot.com/2005/05/google-maps-show-apparent-ufos.html> (dated May 13, 2005)]

Eleven of the present images contain one or more small and almost inconspicuous, usually blue-white spheres that do not reappear in later (updated) imagery of the same geographic area. One image (Figure 3c) shows three spheres within the same field of view in the Palm Beach, Florida area. Many of the spheres appear within several miles of local airports. In one instance (Subject 5) the sphere casts a dark, round shadow on the desert floor beneath it. While the possibility exists that they are all balloons of some kind this cannot be verified without a great deal of additional effort as well as knowledge of the exact time each photo was taken. Whatever they are they would appear to be a potential threat to aviation.



**Figure 1a** Google Earth 2006 Europa Technologies 2009 Imagery date, March 5th, 2002 Eye Altitude 2224ft AGL 26 44 53.70-N 80 04 20.97-W



**Figure 1b** Google Earth 2006 Europa Technologies 2009 Imagery date, January 19, 2005 Eye Altitude 2402ft AGL 26 44 53.70-N 80 04 20.97-W

Figure 1a and 1b. Image of Anomalous Sphere taken on December 30, 2002 above West Palm Beach, Florida.



**Figure  
1c**

Google Earth 2006  
Europa Technologies 2009

Imagery date, November 12, 2007  
Eye Altitude Ground Level  
26 44 53.70-N 80 04 20.97-W

Figure 1c. Image taken November 12, 2007 at ground level of sky area that contained an Anomalous Sphere present in March 5, 2002 ( see Figure 1a).  
(Note: Image confirms that there are no ground artifacts or elevated reflective surfaces. Looking NW above 1582-39th St., Palm Beach Florida.)



Figure 1d. Image taken November 12, 2007 at ground level of sky area that contained an Anomalous Sphere present on March 5, 2002 (see Figure 1a).  
(Note: Image confirms that there are no ground artifacts or elevated reflective surface looking NE above 1582-39th St., Palm Beach Florida.)

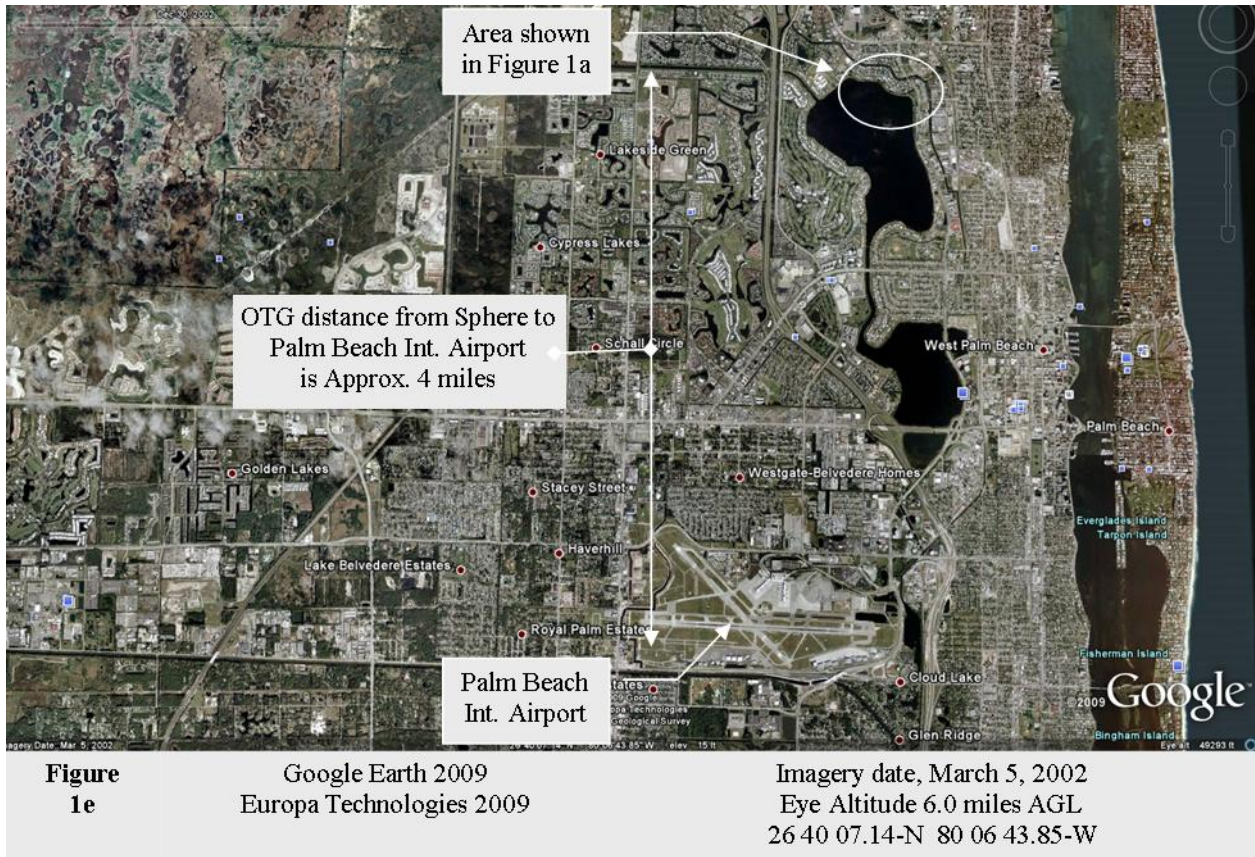


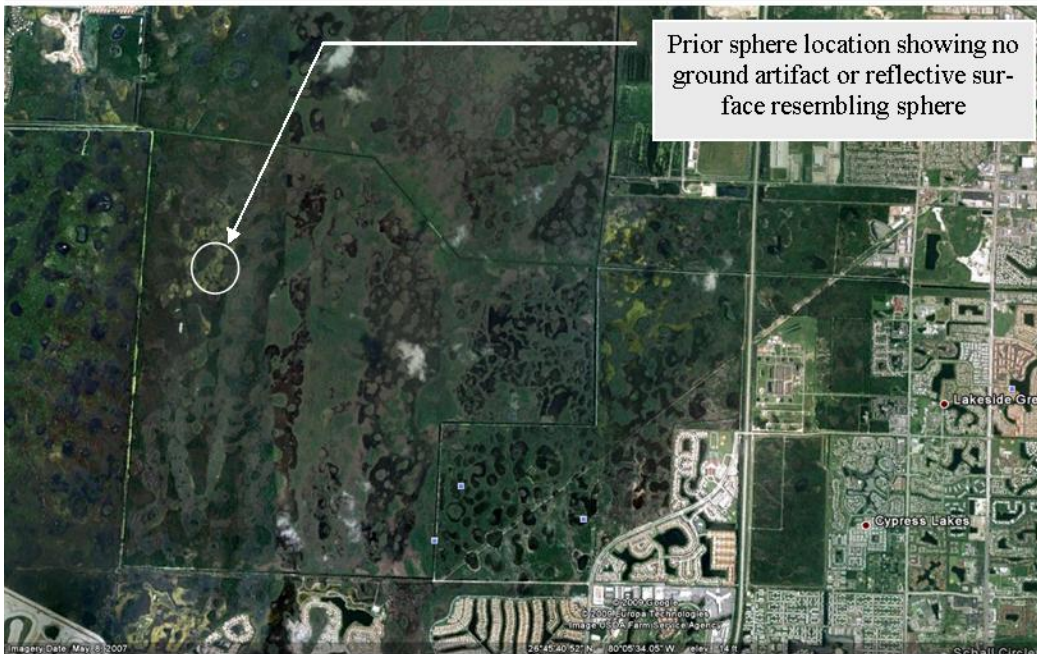
Figure 1e. Overview of area shown in Figure 1a of an Anomalous Sphere on March 5th, 2002 above Palm Beach, Florida.



**Figure 2a**

Google Earth 2006  
Europa Technologies 2009

Imagery date, March 5, 2002  
Eye Altitude 2224ft AGL  
26 44 55.57-N 80 10 45.15-W



**Figure 2b**

Google Earth 2009  
Europa Technologies 2009

Imagery date, May 8, 2007  
Eye Altitude 6.0 miles AGL  
26 45 40.52-N 80 05 34.05-W

Figure 2a and 2b. Anomalous Sphere above Palm Beach Florida on March 5th, 2002.





**Figure 3a**

Google Earth 2006  
Europa Technologies 2009

Imagery date, March 5, 2002  
Eye Altitude 2224ft AGL  
26 54 06.30-N 80 20 17.07-W



**Figure 3b**

Google Earth 2009  
Europa Technologies 2009

Imagery date, March 5, 2002  
Eye Altitude 21,618ft AGL  
26 54 03.92-N 80 21 15.01-W

Figure 3a and 3b. Anomalous Sphere over power generating facility 0.5 miles West of William P. Gwenn airport West Palm Beach, Florida on March 5, 2002, Time: unknown (Note distortion of spherical shape).





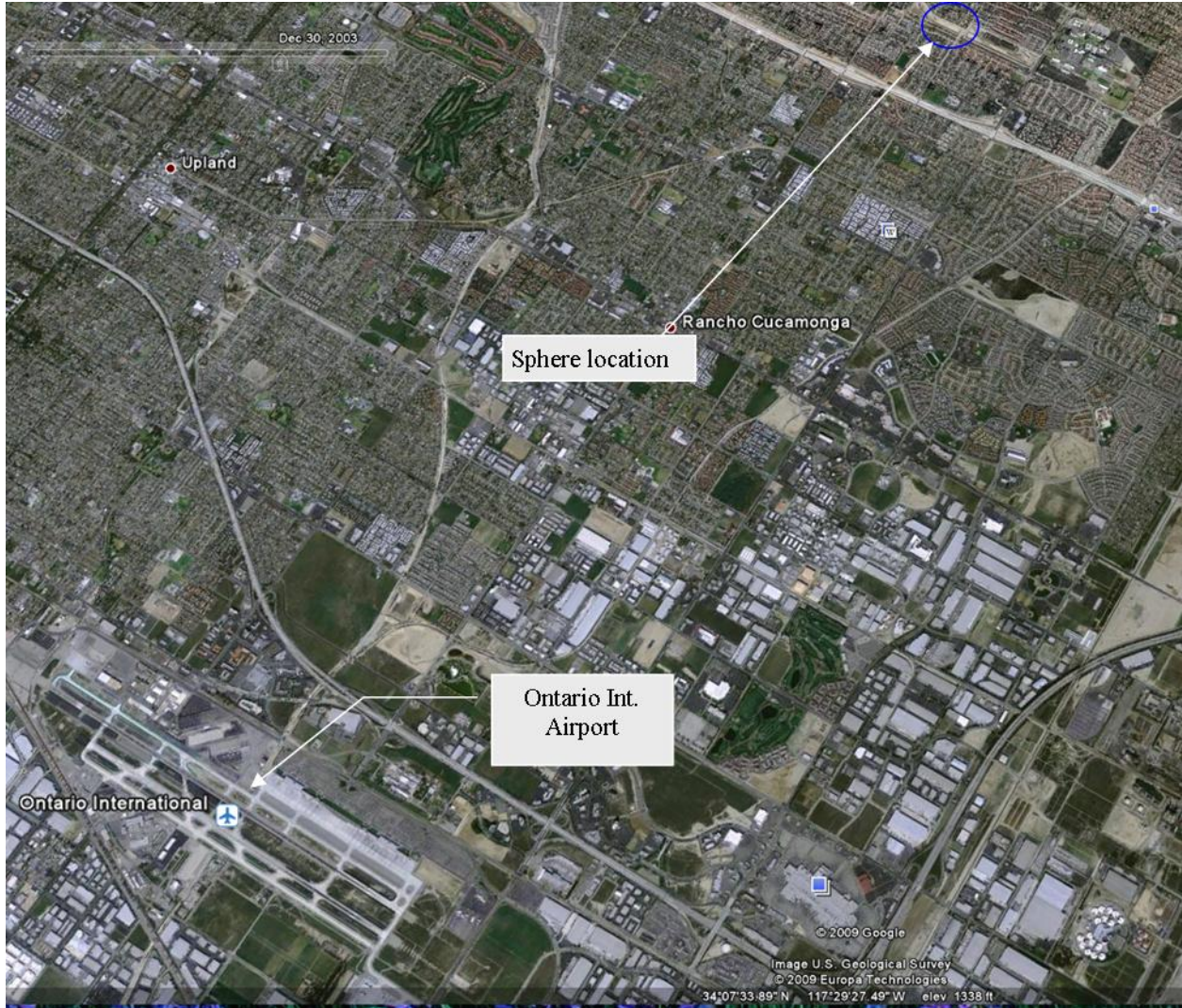


**Figure 4a** Google Earth 2006 Imagery date, March 5, 2003  
Europa Technologies 2009 Eye Altitude 2224ft AGL  
34 08 56.42-N 117 35 05.72-W



**Figure 4b** Google Earth 2006 Imagery date, April 15, 2005  
Europa Technologies 2009 Eye Altitude 6224ft AGL  
34 08 56.42-N 117 35 05.72-W

Figure 4a and 4b. Anomalous Sphere at Ranch Cucamonga, California on March 5, 2003, Time: unknown.



**Figure 4c**

Google Earth 2006  
Europa Technologies 2009

Imagery date, April 15, 2005  
Eye Altitude 6224ft AGL  
34 07 33.89-N 117 29 27.49-W

Figure 4c. Overview of area of Anomalous Sphere at Rancho Cucamonga, California on March 5, 2003, Time: unknown.



**Figure 5a**

Google Earth 2009  
Europa Technologies 2009

Imagery date, April 18, 2006  
Eye Altitude 8924ft AGL (enlarged)  
37 18 13.99-N 116 28 03.18-W



**Figure 5b**

Google Earth 2009  
Europa Technologies 2009

Imagery date, April 18 2006  
Eye Altitude 14,2224ft AGL  
37 18 23.23-N 116 28 05.72-W

Figure 5a and 5b. Anomalous Sphere with ground shadow at Tonopah Test Range, Tonopah, Nevada on April 17, 2006, Time: unknown.

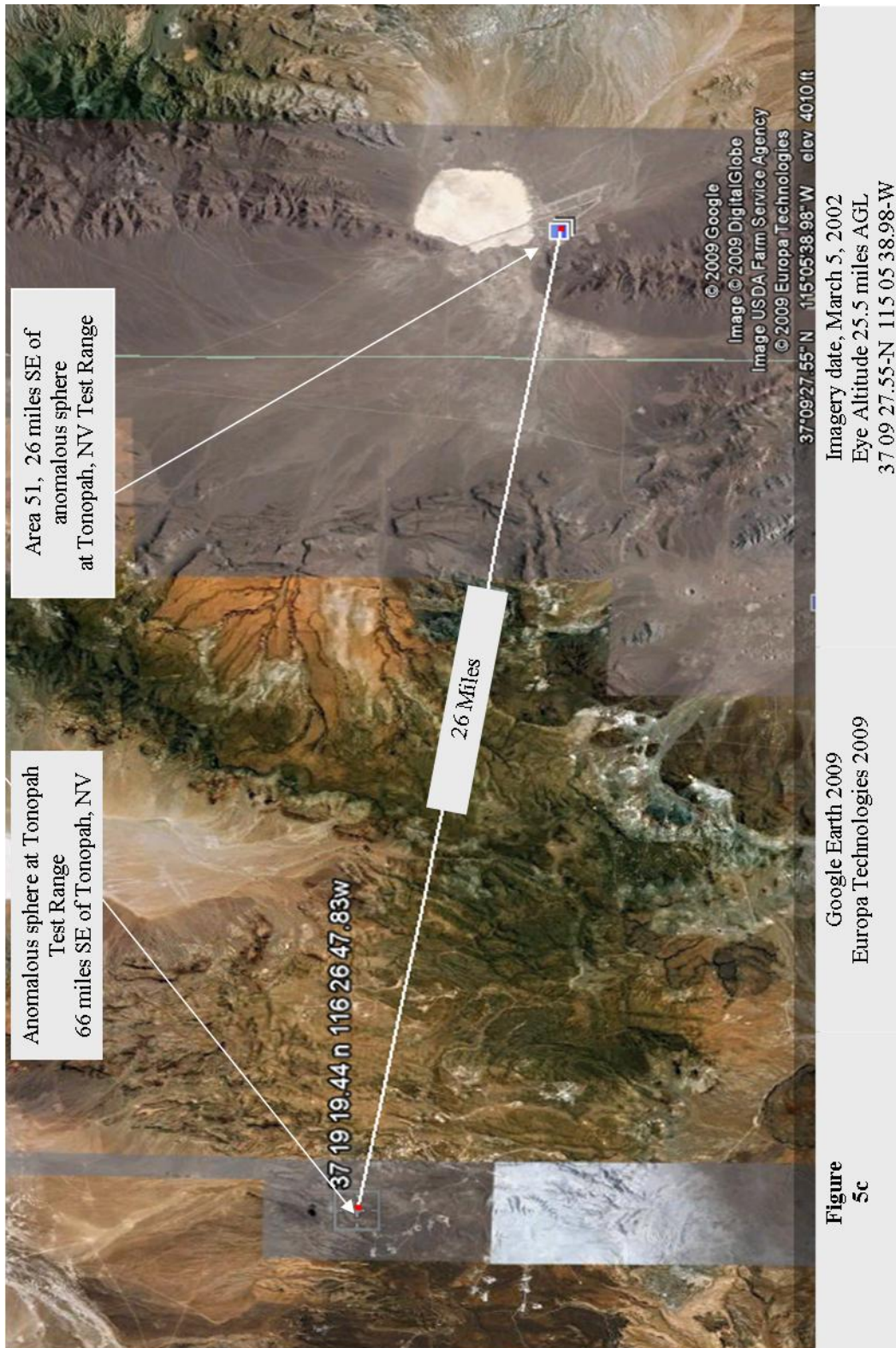


Figure 5c. Location of Anomalous Sphere at Tonopah Test Range, Tonopah, Nevada on April 17, 2006, Time: unknown.

## Discussion and Conclusions,

As a private pilot rated in SEL & sailplanes I have an interest in anything with a potential of adversely affecting the safety of flight.

In this age of the Internet and satellite communications, we find ourselves with access to many new and powerful research tools. One in particular is proving unique in the field of aviation safety research, that being the on-line utility, Google Earth. This site uses orbiting satellites that take high resolution look-down photos of virtually every square foot of the Earth's surface. These photos are taken and then re-taken in periodic updates.

There have been an ever increasing number of sightings involving UAP's (Unidentified Aerial Phenomenon) by both ground and aerial observers. A reasonably large number of these sightings have been of spherical shaped objects.

Due to the great number of photos taken from space of the Earth's surface and anything in between, it was only a matter of time before a UAP would be included in a Google Earth photo. There have been in fact several spherical UAP's captured by Google Earth Imagery as this paper has shown; many of these spheres have been located over heavily populated areas with major airports and very busy air traffic corridors.

I have not drawn any conclusions as to what these spheres are, whether they are solid, semi-solid, gaseous, etc. or what their origin is. What I am certain of is their potential to adversely affect the safety of both commercial and private flights. When a pilot in command (PIC) is distracted from the business of piloting his/her aircraft, then that aircraft and all in it and under it are put at risk! Google Earth images have documented the presence of spherical UAP's in our skies and I feel more than a modicum of concern!